



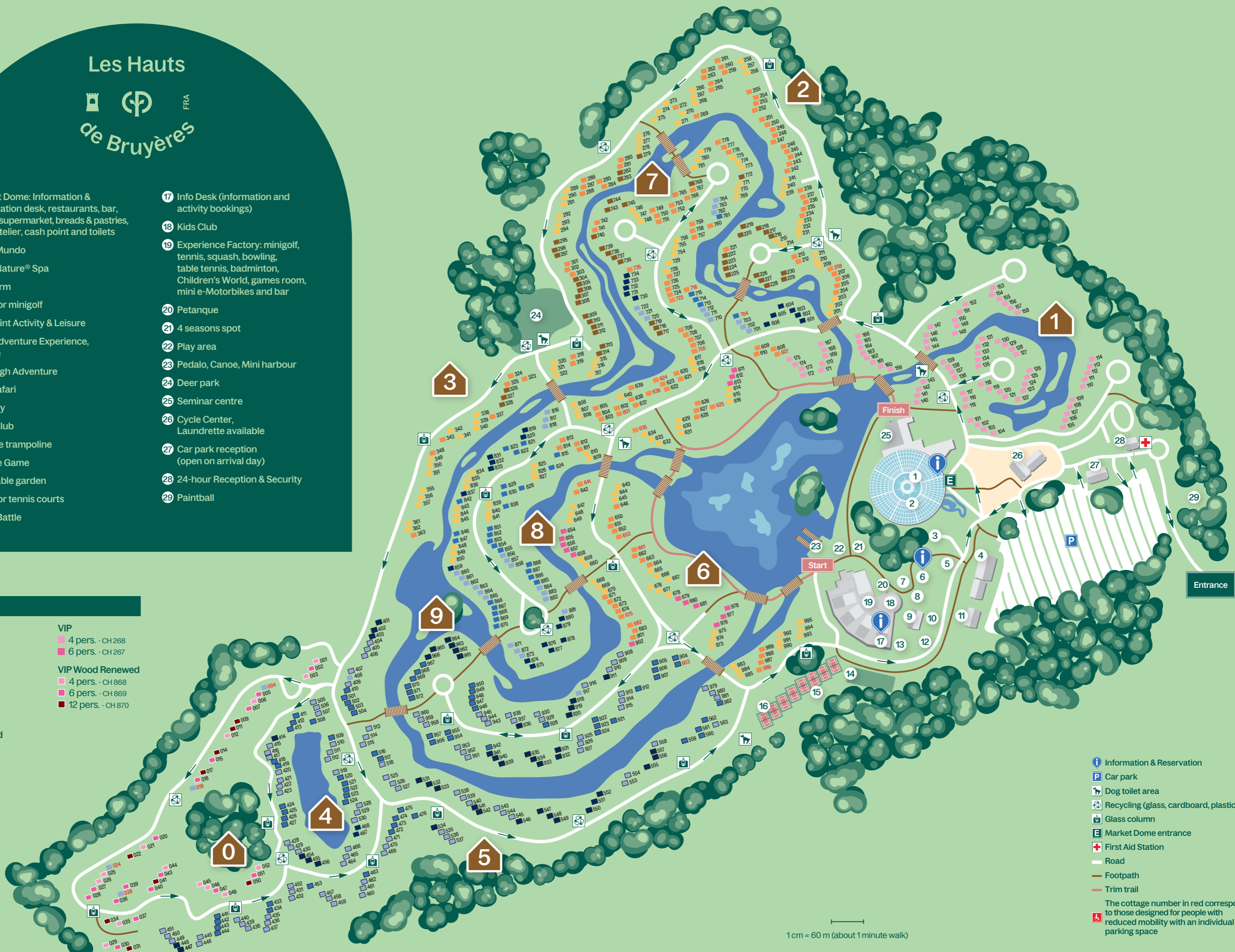
# Les Hauts



- 1 Market Dome: Information & Reservation desk, restaurants, bar, shops, supermarket, breads & pastries, Crea Atelier, cash point and toilets
- 2 Aqua Mundo
- 3 Deep Nature® Spa
- 4 Mini farm
- 5 Outdoor minigolf
- 6 Info point Activity & Leisure
- 7 High Adventure Experience, Zip line
- 8 Kids High Adventure
- 9 Kids Safari
- 10 Archery
- 11 Pony Club
- 12 Bungee trampoline
- 13 Escape Game
- 14 Vegetable garden
- 15 Outdoor tennis courts
- 16 Laser Battle
- 17 Info Desk (information and activity bookings)
- 18 Kids Club
- 19 Experience Factory: minigolf, tennis, squash, bowling, table tennis, badminton, Children's World, games room, mini e-Motorbikes and bar
- 20 Petanque
- 21 4 seasons spot
- 22 Play area
- 23 Pedalo, Canoe, Mini harbour
- 24 Deer park
- 25 Seminar centre
- 26 Cycle Center, Laundrette available
- 27 Car park reception (open on arrival day)
- 28 24-hour Reception & Security
- 29 Paintball

## COTTAGES

- |                        |                         |
|------------------------|-------------------------|
| <b>Comfort</b>         | <b>VIP</b>              |
| 4 pers. - CH 293       | 4 pers. - CH 268        |
| 6 pers. - CH 292       | 6 pers. - CH 267        |
| 8 pers. - CH 291       |                         |
| <b>Premium</b>         | <b>VIP Wood Renewed</b> |
| 4 pers. - CH 288       | 4 pers. - CH 868        |
| 6 pers. - CH 287       | 6 pers. - CH 869        |
| 8 pers. - CH 286       | 12 pers. - CH 870       |
| <b>Premium Renewed</b> |                         |
| 4 pers. - CH 2722      |                         |
| 6 pers. - CH 2723      |                         |
| 8 pers. - CH 2724      |                         |



- Information & Reservation
  - Car park
  - Dog toilet area
  - Recycling (glass, cardboard, plastic)
  - Glass column
  - Market Dome entrance
  - First Aid Station
  - Road
  - Footpath
  - Trim trail
- The cottage number in red correspond to those designed for people with reduced mobility with an individual parking space

1 cm = 60 m (about 1 minute walk)